

## Take a step in the right direction

Whether you're ready for a whole house energy efficiency upgrade or want to make specific home improvements, DTE has a program that suits your needs. Plus, we offer rebates to make your upgrades more affordable.

Reduce energy use, save money, and increase comfort – now and for years to come. Go online or call **866.796.0512** today for more information.

Visit [michigansaves.org](http://michigansaves.org) to learn about easy, affordable financing for your energy efficiency upgrades.



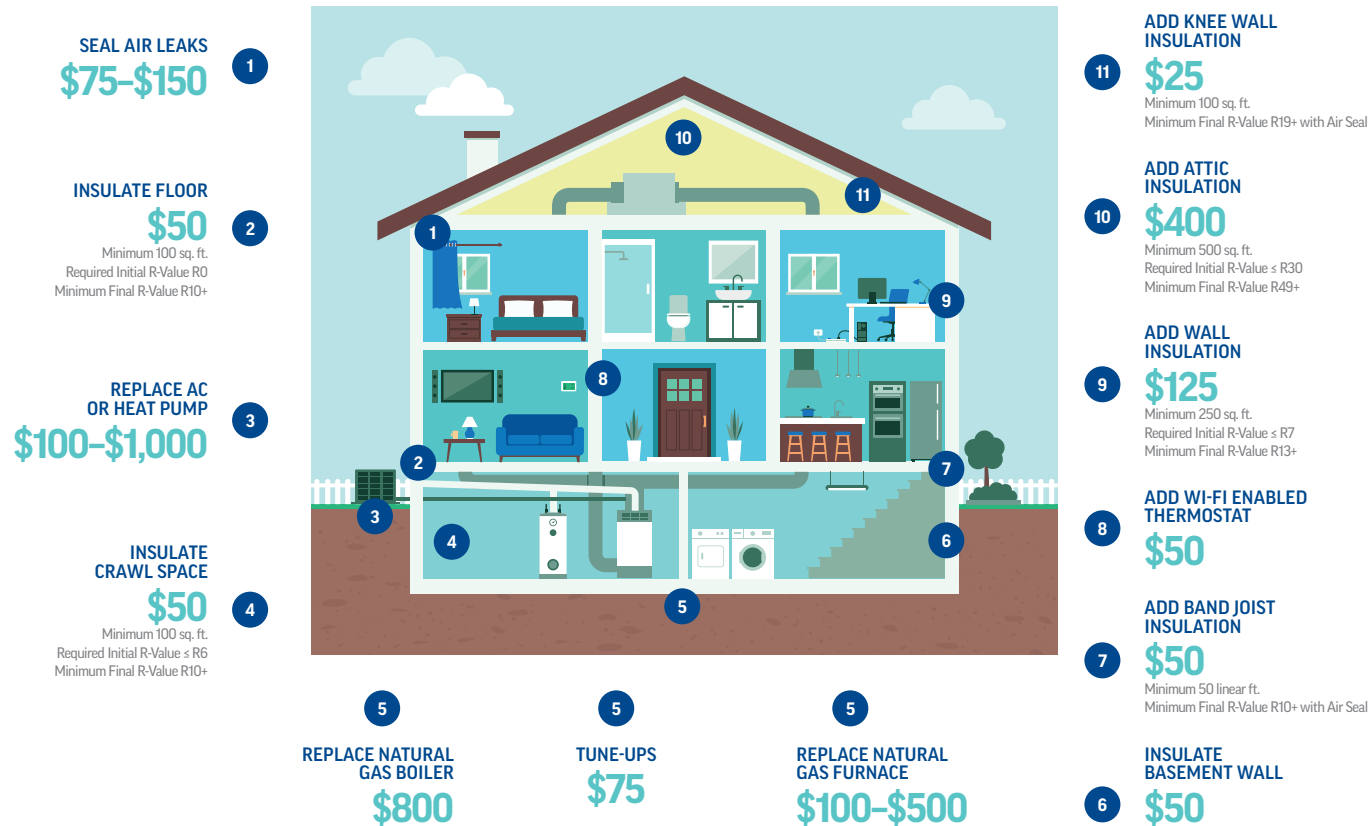
# What's the best way to get home comfort, savings, and rebates?



Find your path with DTE Energy's solutions.

# Choose your path to comfort and savings

Qualifying energy-efficient upgrades make your home more comfortable, reduce energy use, and reduce energy costs.



## Insulation

Ready to improve home comfort, but not quite ready for a whole house approach?

- Find a contractor or do it yourself
- Install or upgrade your insulation
- Get rebates from DTE

[dteenergy.com/insulation](https://dteenergy.com/insulation)



## Comprehensive Energy Assessment

Take a whole house approach to energy efficiency.

- Find a participating contractor at [dteenergy.com/eed](https://dteenergy.com/eed) and schedule a Comprehensive Energy Assessment (CEA)
- Get a \$50 rebate from DTE toward the cost of the CEA
- Decide which improvements you want your contractor to make
- Get rebates from DTE

[dteenergy.com/cea](https://dteenergy.com/cea)

For more information, visit [dteenergy.com/saveenergy](https://dteenergy.com/saveenergy)

Valid for installation dates on or after Jan. 1, 2025. Funds for incentives are limited and available on a first-come, first-served basis. Good/Better/Best options are defined based on equipment efficiency levels. Customers can upgrade more than one piece of equipment with different incentive levels. Premises eligibility is limited to single-family homes. Single-family homes are defined as two or fewer connected units. Each unit must be individually metered for natural gas and electric and each unit must have its own heating, cooling, and water-heating equipment.