

Take a step in the right direction

Whether you're ready for a whole house energy efficiency upgrade or want to make specific home improvements, DTE has a program that suits your needs. Plus, we offer rebates to make your upgrades more affordable.

Reduce energy use, save money, and increase comfort—now and for years to come. Go online or call **866.796.0512** today for more information.

Visit michigansaves.org to learn about easy, affordable financing for your energy efficiency upgrades.



What's the best way to get home comfort, savings, and rebates?



Find your path with DTE Energy's solutions.

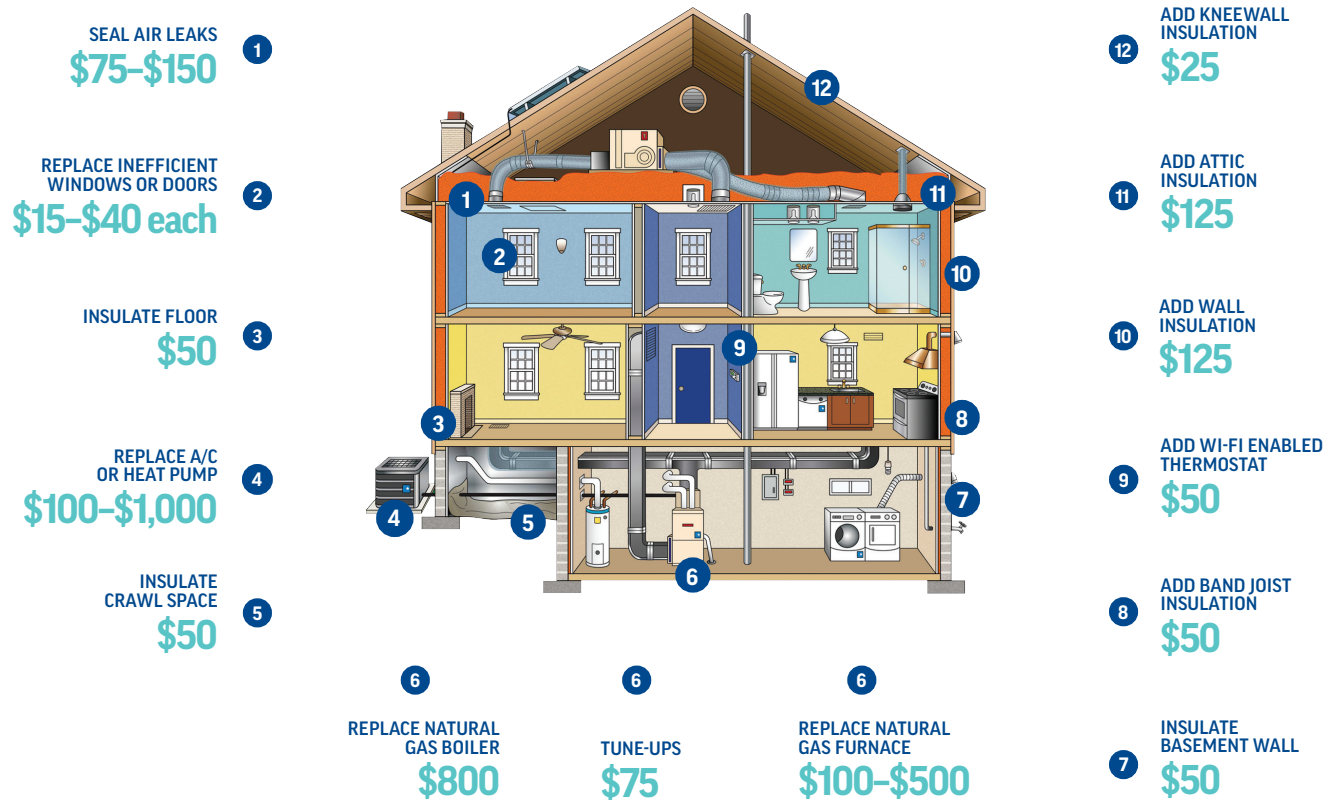
The DTE logo, consisting of the letters "DTE" in a bold, blue, sans-serif font.

The DTE logo, consisting of the letters "DTE" in a bold, blue, sans-serif font.

The DTE logo, consisting of the letters "DTE" in a bold, blue, sans-serif font.

Choose your path to comfort and savings

Qualifying energy efficient upgrades make your home more comfortable, reduce energy use, and reduce energy costs.



Insulation and Windows

Ready to improve home comfort, but not quite ready for a whole house approach?

- Find a contractor or do it yourself
- Install insulation or upgrade to energy efficient windows and patio doors
- Get rebates from DTE

dteenergy.com/insulationwindows

Comprehensive Energy Assessment

Take a whole house approach to energy efficiency.

- Find a participating contractor at dteenergy.com/eed and schedule a Comprehensive Energy Assessment (CEA)
- Get a \$50 rebate from DTE towards the cost of the CEA
- Decide which improvements you want your contractor to make
- Get rebates from DTE

dteenergy.com/cea

For more information, visit dteenergy.com/saveenergy

Valid for installation dates on or after Jan. 1, 2022. Funds for incentives are limited and available on a first-come, first-served basis. Good/Better/Best options are defined based on equipment efficiency levels. Customers can upgrade more than one piece of equipment with different incentive levels. Premise eligibility is limited to single-family homes. Single-family homes are defined as 2 or fewer connected units. Each unit must be individually metered for natural gas and electric and each unit must have its own heating, cooling, and water heating equipment.

DTE